

Horse Barns

Nationwide Delivery

Made in the
U.S.A.



Manufacturer Direct

HORSE BARNS

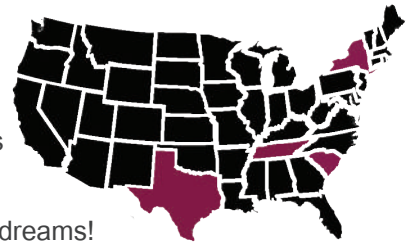


*Experience
the 'Wood-Tex' Difference!*

866-966-3839 ∴ www.woodtex.com

ABOUT US

Wood-Tex Products, founded in 1983, is all about quality craftsmanship. Our commitment to customer satisfaction is key. Wood-Tex Products has manufacturing facilities in New York, South Carolina, Texas and Tennessee, with delivery available nationwide! We offer FREE delivery the first 100 miles from our manufacturing facilities on ALL sizes! So whether your home or property is in San Jose, Waco or Providence; we've got the structure of your dreams!



NOTE FROM THE CEO

I want to personally thank you for your interest and trust in our company, we are very aware that the lifeblood of any business is only as healthy as its passion for serving people.

If you choose to work with us you will find that our entire team is honest, fair, and hardworking. Our level of ingenuity and persistence can be contributed directly to our very beginnings, when my father was willing to sacrifice his own personal comfort for a time in order to operate as efficiently as possible. This passed savings along to the customer which in turn allowed more people to be served, quickly establishing a respected and trustworthy brand.

While we have been blessed with tremendous growth since then and we find ourselves in a much different world than 1983, I am very aware of the absolute necessity of operating consistently with sound principles and values. Turns out 'doing unto others as you would have them do unto you' is a smart business strategy with rewards such as personal fulfillment, strong relationships, repeat customers, and willing referrals.

I hope that you will find us helpful and that we can add value to your life. I am confident you will find our team willing and able, working within an atmosphere of positivity, creativity and encouragement. We look forward to staying in touch with you for many years to come!

Lastly, I am open to any feedback you may have. Feel free to email me anytime at the following:
kent@woodtex.com



I look forward to hearing from you!

Sincerely,

A handwritten signature in black ink, appearing to read 'Kent Lapp'.

Kent Lapp,
CEO/Principal

OUR PROMISE TO YOU:

1. Quality Products - Each structure receives the attention of our skilled Amish or Mennonite craftsman, not the programmed routine of an assembly line. Our team of design consultants will work with you to create the structure of your dreams!

2. Reasonable Pricing - Buy direct from us and you'll save a bundle! Everything is built right here in our manufacturing facility, so we're able to offer standard features on most of our structures that would cost extra anywhere else!

3. Personal Attention - We follow the Golden Rule and treat our customers the way we would want to be treated, with honesty and integrity. Customer satisfaction continues to be our highest priority!

“ No hour of your life is wasted
that is spent in the saddle. ”
- Winston Churchill

INDEX

- 4 Run-In Shed
- 5 Shed Row Barn
- 6 Overhang Barn
- 7 L-Shaped Barn
- 8 Double Wide Barn
- 10 Hinged Roof Barn
- 12 Low Profile Barn
- 14 High Profile Barn
- 16 Monitor Barn
- 18 Options and Features
- 21 Construction Details
- 22 Site and Delivery Preparation



“Built with Confidence, Sold with Pride!”

RUN-IN SHEDS

The Perfect Addition to Any Pasture.



Price:



“ The carpenter's were awesome - those young men worked continuously and never stopped! I am glad I went with Wood-Tex. I was glad to give my money to young Americans! That should be a selling point in today's work world! ”

- Susan P., Rensselaerville, NY

Run-In Sheds provide shelter for your horses from the wind, rain, and snow, or the heat of summer. The wide openings accommodate multiple horses and allow freedom to move easily in and out. Metal tow hooks on the corners are standard, allowing you to move this structure from pasture to pasture. Run-In Sheds can also be used to keep equipment, tools, and firewood out of the elements. For those seeking a simple and functional shelter this may be your answer! Built with the same quality as the rest of our horse barns, white oak framing, white oak kickboard, pine board & batten siding, and 30 year architectural shingles are all part of the standard package.

Standard Features

- 6'x6' Pressure Treated Base
- Metal Reinforced Corners with Tow Hooks
- 4"x4" SYP Posts with 2"x4" SYP Beam Framing with 2"x6" & 2"x10" Headers
- #1 White Pine Board & Batten Siding
- Lifetime Architectural Shingles
- 4' High Solid Oak Kickboard

SHED ROW HORSE BARN

The Most Economical Choice of Shelter.

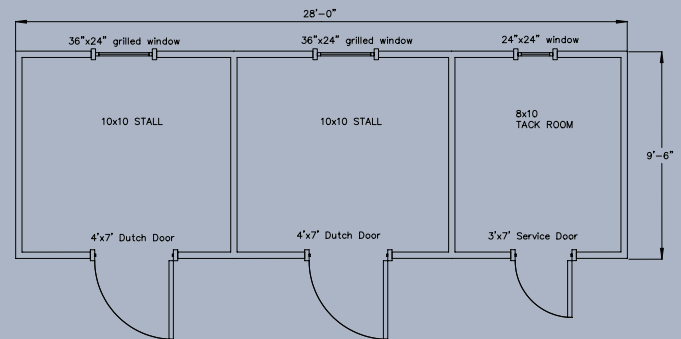


Price:



Shed Row Barns are fully portable and perfect for locations with limited space. Their simple design is practical and efficient. Individual stalls are separated by 4' high oak framed partitions covered with solid white oak kickboard and topped with a 2' high powder-coated metal grill. A solid floor to ceiling partition can be substituted at no charge. Each stall has a 4'x7' Dutch Door and a 36"x24" sliding window with a powder-coated metal grill. A 4' free standing overhang can be added to provide extra protection from the elements. 6', 8', 10', and 12' overhangs with 6x6 post supports can be built on-site to provide more shelter. Constructed with white oak post & beam framing a Wood-Tex Shed Row Horse Barn is built to stand the test of time!

SAMPLE FLOOR PLAN:



Standard Features

- 6'x6' Pressure Treated Base
- Metal Reinforced Corners with Tow Hooks
- 4"x4" SYP Posts with 2"x4" SYP Beam Framing with 2"x6" & 2"x10" Headers
- #1 White Pine Board & Batten Siding
- Lifetime Architectural Shingles
- Service Door
- 24"x24" Sliding Window
- Drop Vent into Adjoining Stall
- Wood Floor in Tack Room
- 4'x7' Dutch Doors With Chew Guard on Bottom Door
- 24"x36" Sliding Window with Powder Coated Steel Bars
- Metal Partition Grill Between Stalls
- 4' High Solid Oak Kickboard

OVERHANG HORSE BARN

The Best of Both Worlds.



Price:



“ We couldn't be happier with both the building and Mahlon's team. Besides being just great people in general, they were very professional. Mahlon even took time to show me how to do things when building a building. They worked some long hours, yet took no shortcuts. From start to finish, working with Wood-TEX has been a great experience, and it was a real pleasure having them at our home.



~John & Eileen B., Abilene, TX

Do you need the openness and convenience of a Run-In Shed and the security of a Shed Row Barn? Get the best of both worlds with an overhang barn! This barn maximizes the convenience and comfort of a Shed Row barn for both you and your horses. While in their stalls the large overhang protects your horses from rain while allowing them to enjoy the fresh air. The overhang also gives you ample room for tacking up in the shade! Design your barn with the perfect number of stalls, storage rooms, and tack rooms at no extra charge!

Standard Features

- 6'x6' Pressure Treated Base
- Metal Reinforced Corners with Tow Hooks
- 4"x4" SYP Posts with 2"4" SYP Beam Framing with 2"x6" & 2"x10" Headers
- #1 White Pine Board & Batten Siding
- Lifetime Architectural Shingles
- Service Door
- 24"x24" Sliding Window
- Drop Vent into Adjoining Stall
- Wood Floor in Tack Room
- 4'x7' Dutch Doors With Chew Guard on Bottom Door
- 24"x36" Sliding Window with Powder Coated Steel Bars
- Metal Partition Grill Between Stalls
- 4' High Solid Oak Kickboard
- 4', 6', 8', 10', 12' Overhang
- Treated 6'x6' Posts for Overhang
- 2'x6' Rafters

L-SHAPED HORSE BARN

For Style and Efficiency.

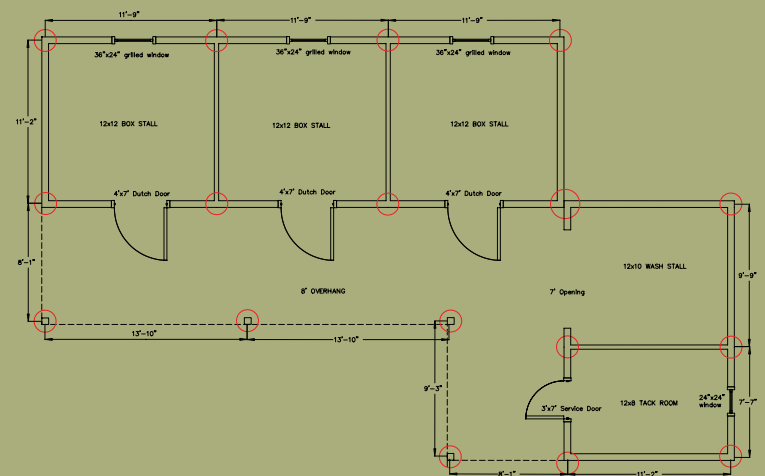


Price:



By choosing this beautiful and aesthetically pleasing barn you can maximize the efficiency of your property and daily operation. Options for maximizing your L-Shaped barn's usefulness include adding a front overhang for extra space and protection from the elements or building a roof over the back corner making the perfect shelter for your tractor or tools.

SAMPLE FLOOR PLAN:



Standard Features

- 6'x6' Pressure Treated Base
- Metal Reinforced Corners with Tow Hooks
- 4"x4" SYP Posts with 2"x4" SYP Beam Framing with 2"x6" & 2"x10" Headers
- #1 White Pine Board & Batten Siding
- Lifetime Architectural Shingles
- Service Door
- 24"x24" Sliding Window
- Drop Vent into Adjoining Stall
- Wood Floor in Tack Room
- 4'x7' Dutch Doors With Chew Guard on Bottom Door
- 24"x36" Sliding Window with Powder Coated Steel Bars
- Metal Partition Grill Between Stalls
- 4' High Solid Oak Kickboard
- 4', 6', 8', 10', 12' Overhang
- Treated 6'x6' Posts for Overhang
- 2'x6' Rafter



Rear View*



DOUBLE WIDE *Modular Horse Barn*

Price: ★★☆☆☆

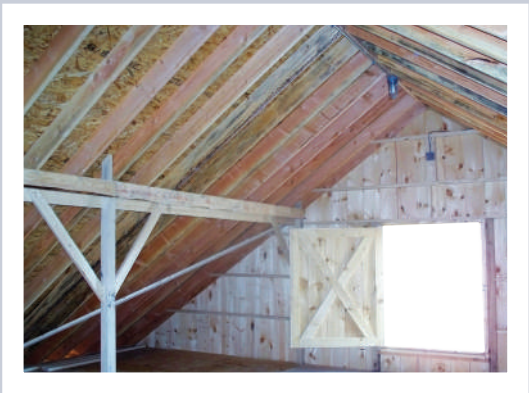
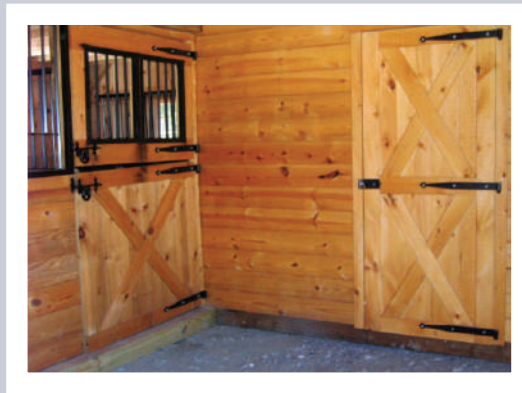


The Double Wide Barn is perfect for the individual or farm operating on a budget. Customizing your floor plan allows you to increase the number of stalls and storage rooms or have a completely enclosed side aisle.

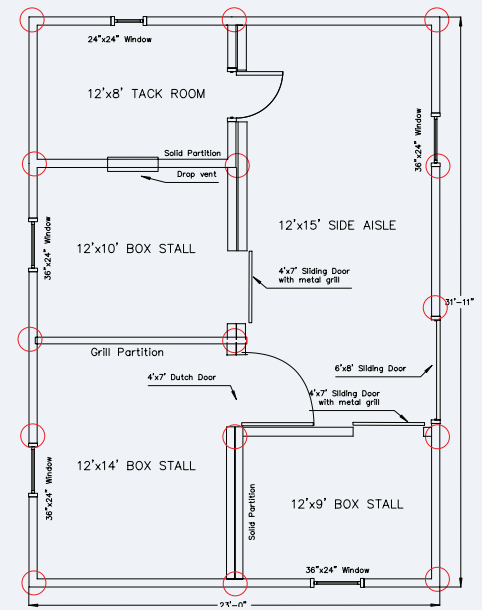
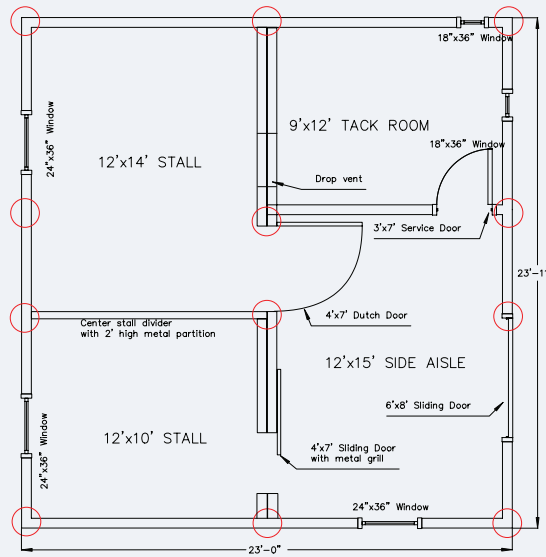
“ Thank you for the beautiful barn and by enriching our lives by sharing yours with us for a few days. Give us a call if you're ever out our way again. The fellas that came all the way from New York to build a horse barn are getting to be something of a local legend out here!

- Lyn B., Durango, CO ”

Interior Photos



SAMPLE FLOOR PLANS:



Standard Features

- 6"x6" Pressure Treated Timbers for base
- 4"x4" Solid SYP Posts
- 2"x4" Solid SYP Beam Framing
- 2x10 Headers
- 2x6 Rafters:
- 24" on center with 2x4 perlin
- White Pine Board and Batten Siding
- 40 yr metal roof
- Vented Soffits and Ridge
- Tack/Feed Room includes:
- Wood Floor in Tack Room
- 3'x7' Service Door
- (2) 18"x36" Sliding Windows with Screens
- Drop Vent into adjoining stall

Aisle Includes:

- 2x8 SYP Tongue and Groove Stall Fronts
- 6'x8' Sliding Barn Door
- 36"x24" Sliding 9 Light Window with powder coated metal grills

Stalls Include:

- 4'x7' Sliding Doors with Powder Coated Metal Grill (only on stalls that have enough space joining aisle).
- 36"x24" Sliding Window with powder coated metal grills
- 4' high Kickboard, White Oak OR 2x8 SYP T&G Kickboard
- Solid or Grill Partition between stalls





HINGED ROOF *Modular Horse Barn*

Price: ★★☆☆☆



This two story design includes stairs and a railing or a drop down ladder for easy access to the loft where you can store an abundance of hay or other supplies. Built in both single wide and double wide models with either an A-Frame or Gambrel roof the options for these barns are many! And with a hinged roof system these barns are simple to deliver keeping costs lower. Once at your location we hinge the roof up, slide the modules together, bolt it all in place, finish the trim work and, voila, you're in business!



“ We love the arena! It's absolutely beautiful. We can't say enough about your crew, they worked through some awful weather! We'll continue to pass your name along. No one can believe how quickly it went up! The entire process was a pleasure.

- Dave and Becca D., Fairfax, VT

”



LOW PROFILE *Modular Horse Barn*

Price: ★★☆☆☆



Raised Roof



Gambrel Roof

A functional center aisle barn, our Low Profile Modular may be just what you are looking for! In order to save you time and money most of the construction is done at our shop and the stall modules are delivered fully assembled. Once on-site the roof over the center aisle is constructed and the finishing touches are put on the gable ends. After just 1-3 days of on-site work your barn will be ready to use! This model is available in three styles, the standard Low Profile, the Raised Roof and the Gambrel Roof. An extra stall or storage room accommodates hay, tack, and tools.

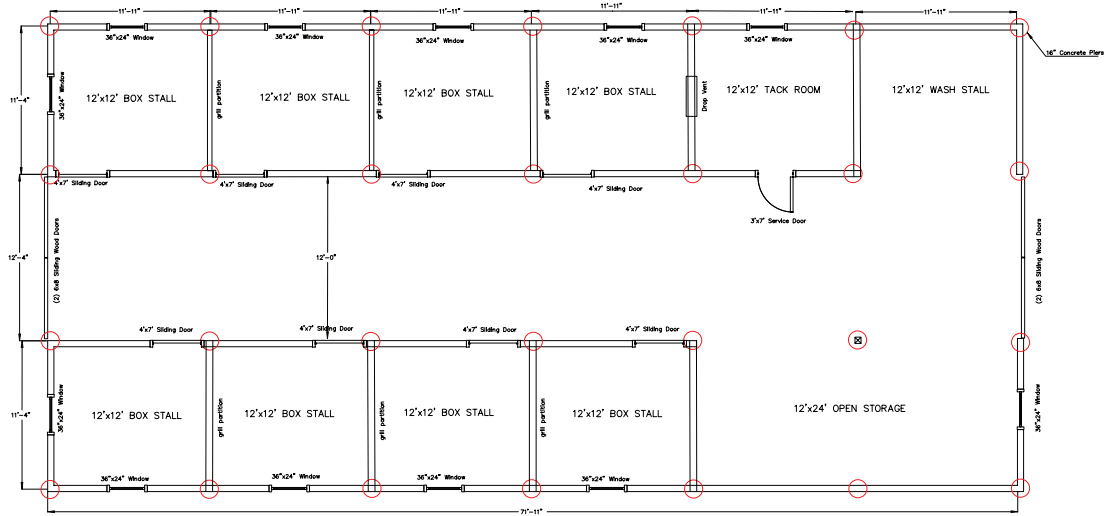
“ Your company gave us the barn we always dreamed we would have! ”

- Dan & Michelle L., Huntington, MA

Interior Photos



SAMPLE FLOOR PLANS:



Standard Features

- 6'x6' Pressure Treated Base
- Metal Reinforced Corners with Tow Hooks
- 4"x4" SYP Posts with 2"4" SYP Beam Framing with 2"x6" & 2"x10" Headers
- #1 White Pine Board & Batten Siding
- Lifetime Architectural Shingles
- Service Door
- 24"x24" Sliding Window
- Drop Vent into Adjoining Stall
- Wood Floor in Tack Room
- 24"x36" Sliding Window with Powder Coated Steel Bars
- Metal Partition Grill Between Stalls
- 4' High Solid Oak Kickboard
- 4'x7' Sliding Door with Grill Stall Front
- 10', 12' Center Aisle
- 2'x6' Rafters
- Sliding Doors on Front Aisle End
- 2'x6' Tongue & Groove on Stall Front



HIGH PROFILE Modular Horse Barn

Price: ★★★★★



Gambrel Roof

In the High Profile Modular Horse Barn you will find a versatile and spacious design. With 9 ½' side walls and interior walls this barn offers great stall space and head room. Both attic truss and full loft systems are available as well as a variety of roof pitches for a variable peak height. This barn can also accommodate a 6', 8', 10', or 12' overhang. On-site construction time may be a little more than other style barns but the many wonderful features of this barn make it worth it!



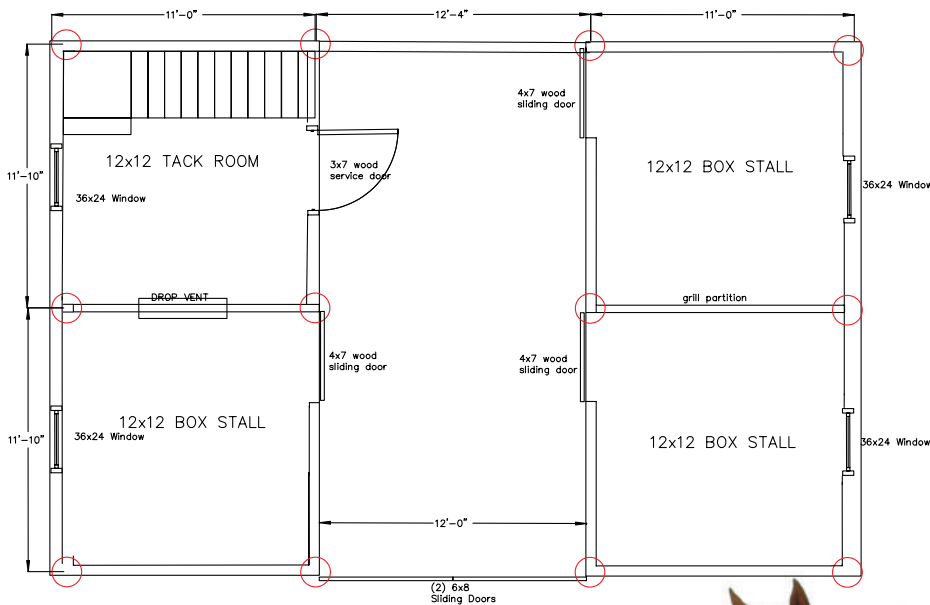
“ I have been meaning to thank-you and your company for providing me and my horse with the wonderful horse barn we purchased this spring. It's worked out perfectly for us and my horse loved it right away. I'll be sure to recommend you to my friends. Thanks again!”

- Lynne S., Townsend, MA

Interior Photos



SAMPLE FLOOR PLANS:



Standard Features

- 6'x6' Pressure Treated Base
- Metal Reinforced Corners with Tow Hooks
- 4"x4" SYP Posts with 2"x4" SYP Beam Framing with 2"x6" & 2"x10" Headers
- #1 White Pine Board & Batten Siding
- Lifetime Architectural Shingles
- Service Door
- 24"x24" Sliding Window
- Drop Vent into Adjoining Stall
- Wood Floor in Tack Room
- 24"x36" Sliding Window with Powder Coated Steel Bars
- Metal Partition Grill Between Stalls
- 4' High Solid Oak Kickboard
- 4'x7' Sliding Door with Grill Stall Front
- 10', 12' Center Aisle
- 2'x6' Rafters
- Sliding Doors on Front Aisle End
- 2'x6' Tongue & Groove on Stall Front





MONITOR *Modular Horse Barn*

Price:



The uses for this barn are limited only by the imagination! Use the loft for hay storage, living space, an office, or anything your creativity can design! If you don't need the loft space for storage take advantage of the cathedral ceiling option available with this barn for extra light and ventilation. The side walls of this barn are 9 ½' and the interior and gable end walls are even taller providing a very open atmosphere. You will find the many standard features of the Monitor geared to your convenience and service!

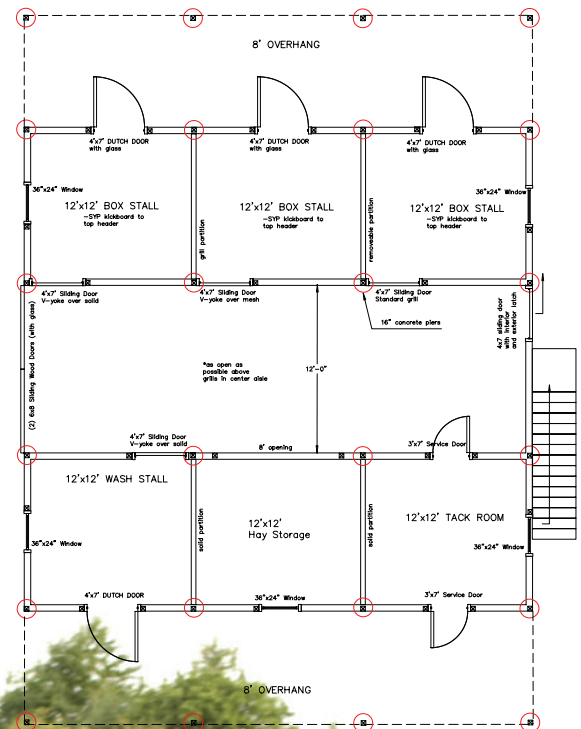
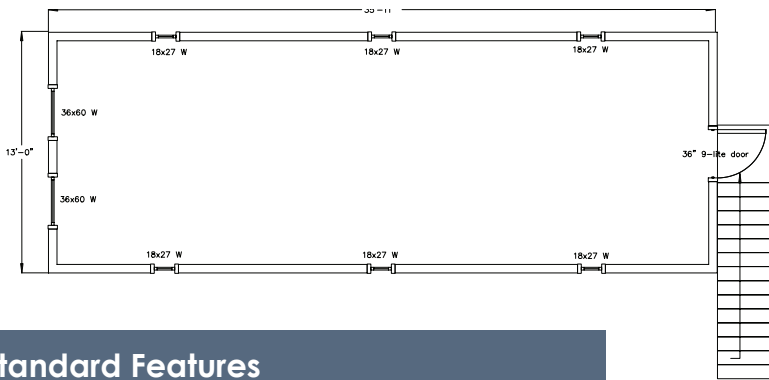
“ Our new barn is AMAZING, having the horses home is a dream come true. The barn is even nicer than I could imagined, my husband could not believe the attention to detail. Even the building inspector was impressed. ”

- Victoria & Peter

Interior Photos



SAMPLE FLOOR PLANS:



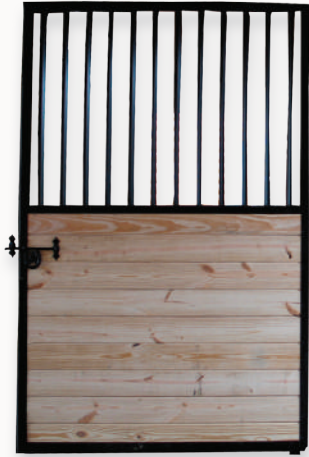
Standard Features

- 6'x6' Pressure Treated Base
- 4"x4" SYP Posts with 2"4" SYP Beam Framing with 2"x6" & 2"x10" Headers
- #1 White Pine Board & Batten Siding
- Lifetime Architectural Shingles
- 2x4 Solid Oak Beam Framing and LVL Headers
- 9'6" Sidewalls
- 4/12 Roof System (Hinged)
- Service Door
- 24"x24" Sliding Window
- Drop Vent into Adjoining Stall
- Wood Floor in Tack Room
- 24"x36" Sliding Window with Powder Coated Steel Bars
- Metal Partition Grill Between Stalls
- 4' High Solid Oak Kickboard
- 4'x7' Sliding Door with Grill Stall Front
- 2x8 Tongue & Groove on Stall Front
- 10', 12' Center Aisle
- Sliding Doors on Front Aisle End
- 2'x6' Tongue & Groove on Stall Front
- Full Length Soffit Vent
- Full Length Ridge Vent
- House Wrap
- (4) Cross-Tie Hooks, (back in or walk in?)
- Glassbord Paneling on top of 3/4" Pressure Treated Plywood



DOORS

Choose the door that best meets the needs of you and your horses.



Standard



Solid



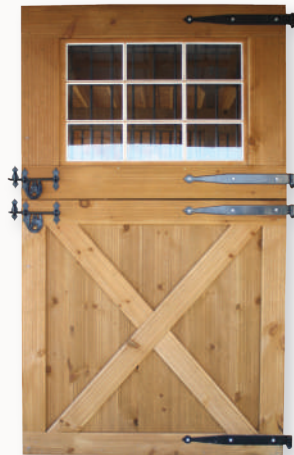
V-Yoke over
Solid



V-Yoke over
Mesh



Mesh Stall Gate



Dutch Doors With
Window Grills

WINDOWS

Each tack room, storage room, and stall is equipped with a window to let in natural light.

24"x36" Stall Window



(Outside)



(Inside)

24"x24" Tack Room Window



(Outside)



(Inside)

VENTS

Add a shingle over ridge vent, gable vents, or soffit vents, to your barn for extra ventilation. A stall drop vent can be used as an extra window for ventilation and light, or from a storage room to the stall as a quick and convenient drop for feed and hay.



Stall Drop Vent



Soffit Vent



Shingle over
Ridge Vent



Gable Vent

ELECTRIC OPTIONS

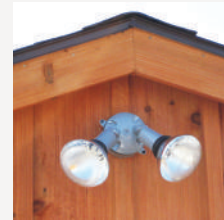
Equip your barn with lights, receptacles, and switches making your chores easier and more convenient.



Panel Box &
Receptacle



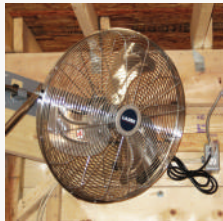
Caged Light



Flood Light

OTHER OPTIONS

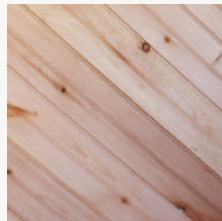
Add a touch of detail to your barn with a cupola, weather vane, or both! Other options for your convenience are available to make the time spent in your barn more enjoyable.



Stall Fan



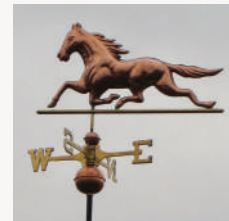
Chew Guard



1"x6" Tongue &
Groove



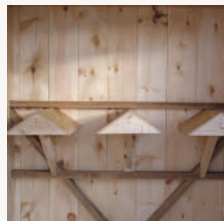
Water Bucket
Swing Door



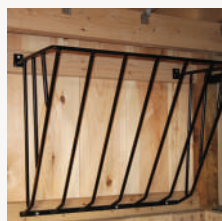
Copper Horse
Weather Vane



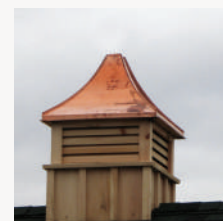
Metal Roof
With Insulation



Saddle Racks



Hay Rack



Cupola

STAIN



Fir Pine



Country Cedar



Country Brown



Mushroom

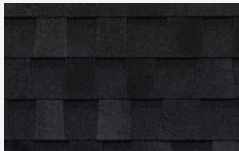


Mahogany

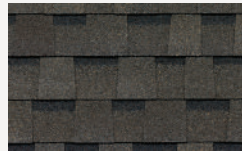
Enhance your barn's appearance with one of our five beautiful stains or choose from one of our 16 different paint options!

ROOFING

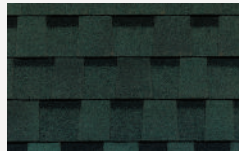
Architectural Shingles:



Black



Weathered



Green



Desert



Hickory



Dove

Architectural Shingles:

30 Year Architectural Shingles are standard on all our horse barns except the Monitor Barn. Choose from our six colors or provide a custom color.

Metal:



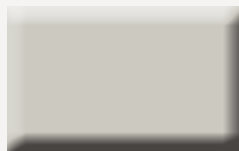
Brown



Barn Red



Charcoal



Gray



Ivy Green

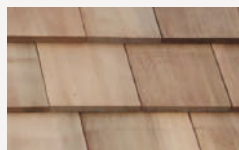


Black

Metal:

The Monitor Barn comes standard with a 40 year metal roof, or upgrade any other barn with this option.

Other:



Cedar Shake Shingles

Other:

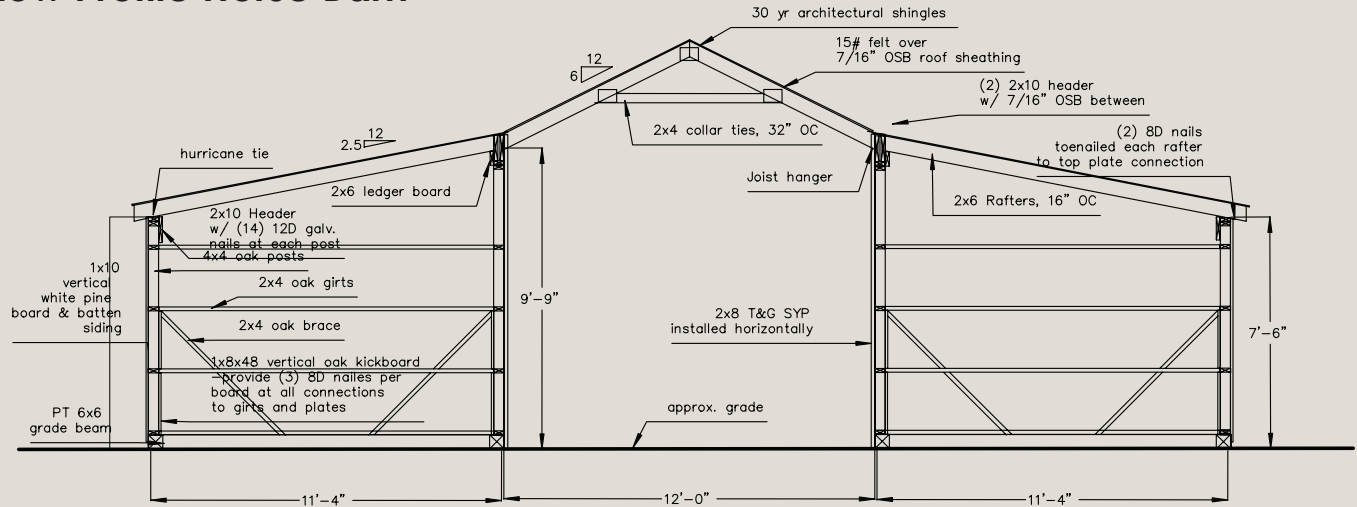
Cedar Shake Shingles can add a beautiful and unique flare to your barn.

* Colors shown are approximate only, actual color may vary from pictured samples

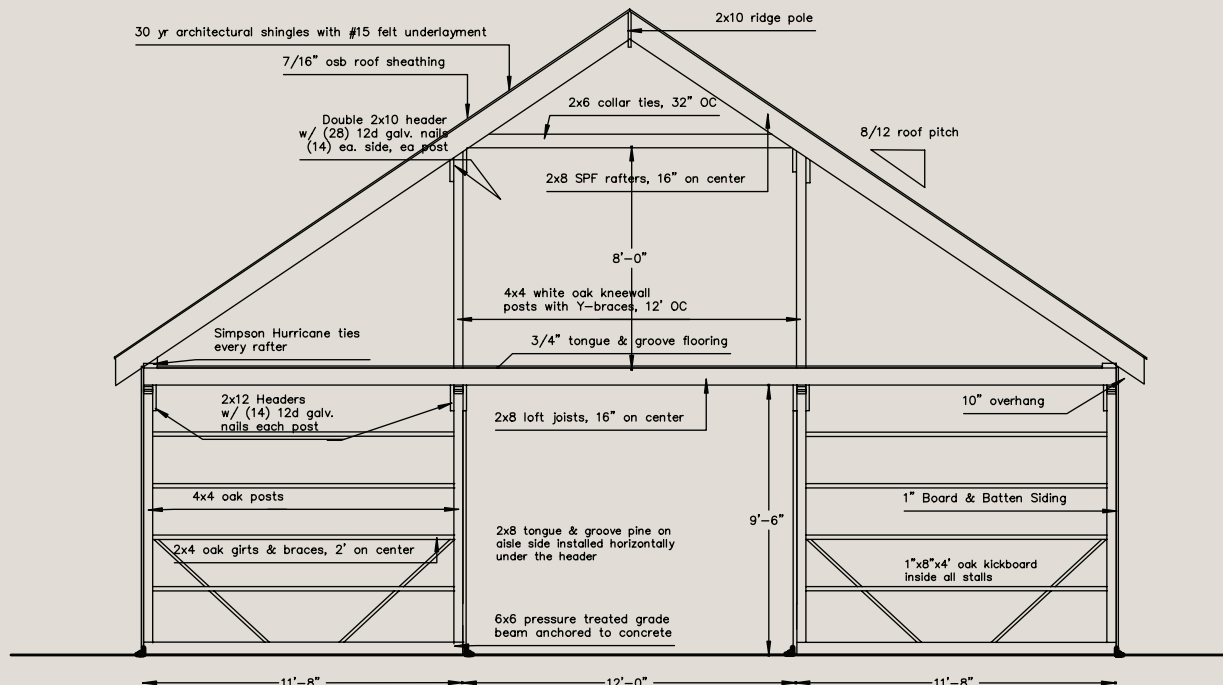
QUALITY CONSTRUCTION MEANS YEARS OF CAREFREE USE.

When you purchase a structure from Wood-Tex Products, you can be assured it was designed and constructed with the highest standard of workmanship and quality consistent with our company and values. Each structure receives the attention of a skilled Amish or Mennonite craftsman, not the programmed routine of an assembly line. Your satisfaction is our first and highest goal!

Construction Details for Low Profile Horse Barn



Construction Details for High Profile Horse Barn



SITE & DELIVERY PREPARATION

Site Preparation for Shed Row Horse Barns and Run-In Sheds

Shed Row Horse Barns and Run-In Sheds may be set on almost any level surface. The best site is 3 to 5 inches of stone dust (a very fine, crushed stone). Leveled and compacted stone dust makes an excellent pad with good drainage.

Site Preparation for Modular Horse Barns and Overhang Barns

Modular Horse Barns and Horse Barns with an 8', 10' or 12' overhang must have concrete piers or a concrete slab installed. After the concrete is installed and cured the barn is then delivered and set.

Delivery: Here's What to Expect

Most deliveries are done with mid size trucks and 40' trailer. No two deliveries are the same and the drivers will always take a look at your site and decide on the best way to access it.

We normally will back onto your carefully prepared site, push the shed or barn off the back of the trailer with our winch until it is overhanging a couple feet then tilt the trailer up, setting the back of the barn onto your pad.

With our trailer still tilted up we will then pull out from underneath the barn, setting it on the exact location you have planned. We have a sideshift on the back of our trailer so the front of the barn can be moved left or right several feet as we're pulling out from underneath, allowing us to place your barn 'on the dime.'

We will need 50-60 feet of opening to pull our delivery truck and trailer out from underneath your new structure.

The driver will then be sure the barn is situated properly on your pad, making sure all doors and windows work properly and are not binding due to an unlevel site. If you are unsure of the levelness of your pad you may want to have shims available to place under the corners of the shed, our driver's carry jacks and they will assist you with this.



Also Available from Wood-Tex...



Storage Sheds



Garages



Modular Homes



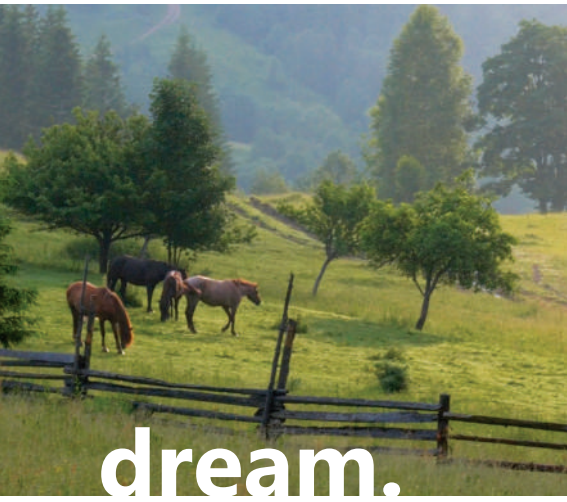
Chicken Coops



Pergolas



Poly Furniture



dream.



experience.



ride.



“Join the buzz...”



[facebook.com/
woodtex](https://facebook.com/woodtex)



[twitter.com/
woodtexteam](https://twitter.com/woodtexteam)



[youtube.com/
user/woodtex](https://youtube.com/user/woodtex)